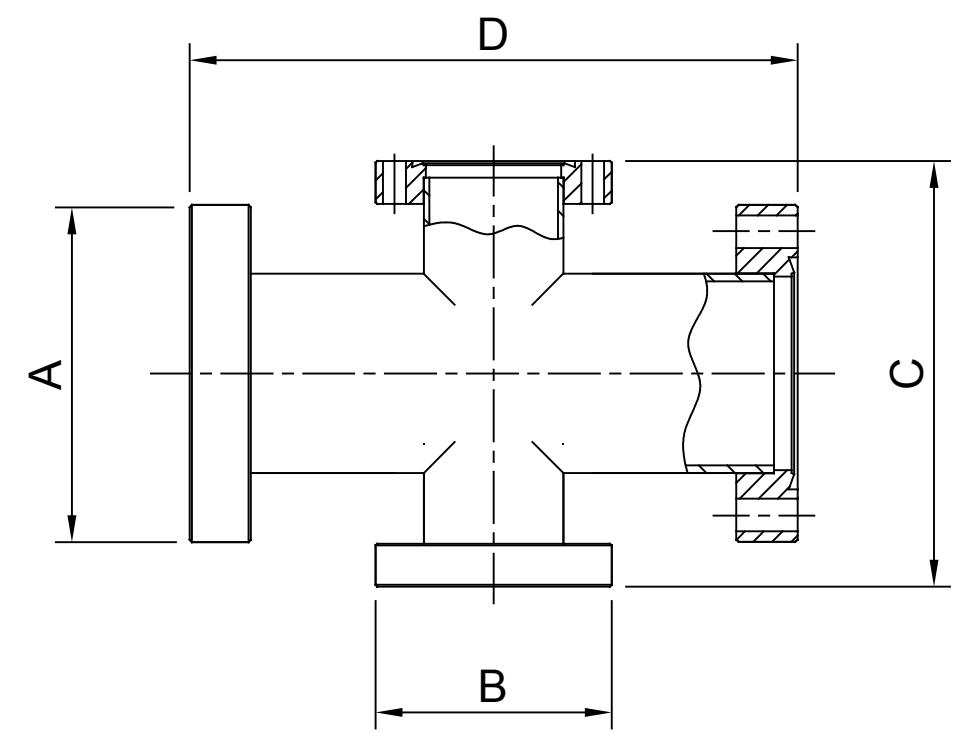


CF 4-WAY REDUCING CROSSES, FIXED

- * MATERIAL: STAINLESS STEEL
- * BAKEABLE UP TO 450°C
- * VACUUM RATING 1x10⁻¹¹ mbar
- * WIDE RANGE OF ELBOWS & TEES ARE AVAILABLE

ORDER CODE	MAT'L	NW	A	B	C	D	BOLT HOLES
UX3516	304L	35/16	70	34	120	162	IN LINE
UX6316	304L	63/16	114	34	154	210	IN LINE
UX6335	304L	63/35	114	70	154	210	IN LINE
UX1016	304L	100/16	152	34	190	270	IN LINE
UX1035	304L	100/35	152	70	190	270	IN LINE
UX1063	304L	100/35	152	114	190	270	IN LINE
UX1535	304L	150/35	203	70	240	334	IN LINE
UX1563	304L	150/63	203	114	240	334	IN LINE
UX1510	304L	150/100	203	152	240	334	IN LINE
UX2010	304L	200/100	254	152	290	406	IN LINE
UX2015	304L	200/150	254	163	290	406	IN LINE
UX3516S	304L	35/16	70	34	120	162	STRADDLED
UX6316S	304L	63/16	114	34	154	210	STRADDLED
UX6335S	304L	63/35	114	70	154	210	STRADDLED
UX1016S	304L	100/16	152	34	190	270	STRADDLED
UX1035S	304L	100/35	152	70	190	270	STRADDLED
UX1063S	304L	100/35	152	114	190	270	STRADDLED
UX1535S	304L	150/35	203	70	240	334	STRADDLED
UX1563S	304L	150/63	203	114	240	334	STRADDLED
UX1510S	304L	150/100	203	152	240	334	STRADDLED
UX2010S	304L	200/100	254	152	290	406	STRADDLED
UX2015S	304L	200/150	254	163	290	406	STRADDLED



CF 4-WAY REDUCING CROSSES, 2 FLANGES ROTATABLE

- * MATERIAL: STAINLESS STEEL
- * BAKEABLE UP TO 450°C
- * VACUUM RATING 1x10⁻¹¹ mbar
- * WIDE RANGE OF ELBOWS & TEES ARE AVAILABLE

ORDER CODE	MAT'L	NW	A	B	C	D
UX3516R	304L	35/16	70	34	120	162
UX6316R	304L	63/16	114	34	154	210
UX6335R	304L	63/35	114	70	154	210
UX1016R	304L	100/16	152	34	190	270
UX1035R	304L	100/35	152	70	190	270
UX1063R	304L	100/63	152	114	190	270
UX1535R	304L	150/35	203	70	240	334
UX1563R	304L	150/63	203	114	240	334
UX1510R	304L	150/100	203	152	240	334
UX2010R	304L	200/100	254	152	290	406
UX2015R	304L	200/150	254	163	290	406

