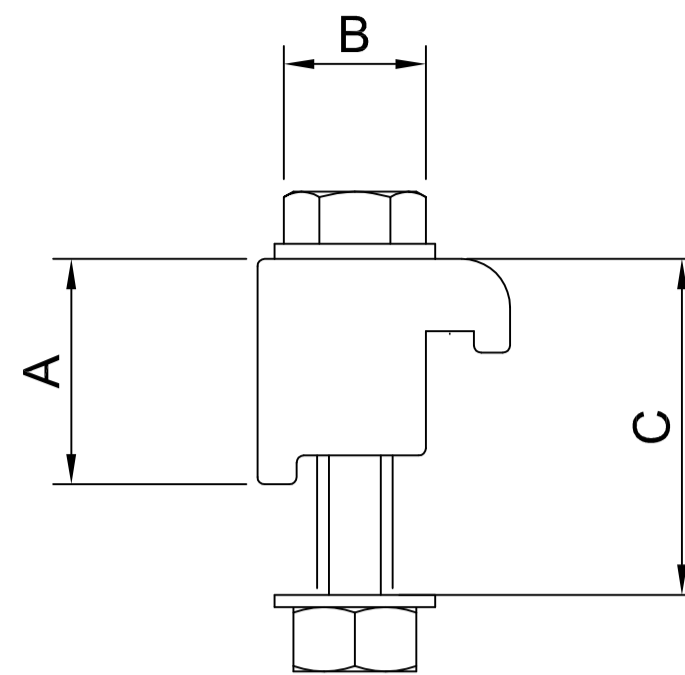


### ISO WALL CLAMPS, STEEL NUTS AND WASHERS, ALUMINIUM

- \* MATERIAL: ALUMINIUM
- \* BAKEABLE TO 150° C

Used with bolt through bolt holes and centering ring

ORDER CODE	NW	A	B	C
ISO63/100WCNA	63/100	22.5	M8	44
ISO160/250WCNA	160/250	23	M10	50

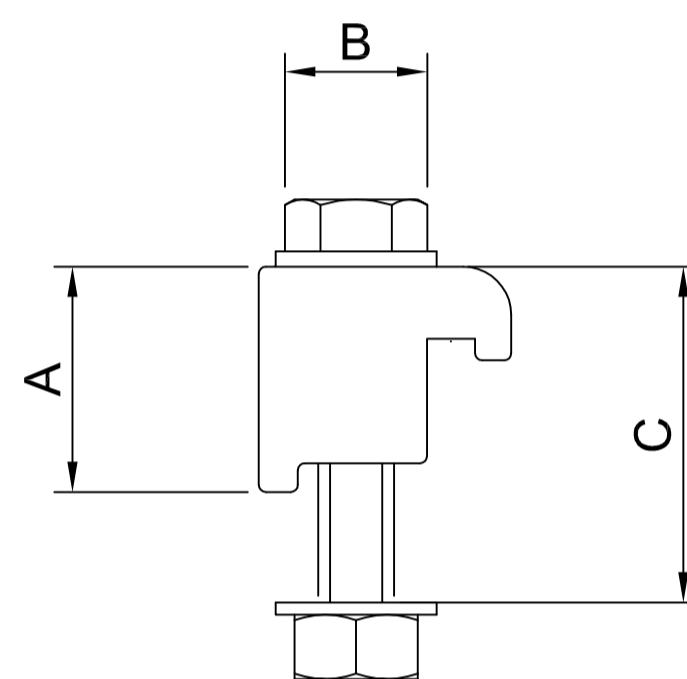


### ISO WALL CLAMPS, STEEL NUTS AND WASHERS, MILD STEEL, ZINC PLATED

- \* MATERIAL: MILD STEEL
- \* BAKEABLE TO 150° C

Used with bolt through bolt holes and centering ring

ORDER CODE	NW	A	B	C
ISO63/100WCN	63/100	22.5	M8	44
ISO160/250WCN	160/250	23	M10	50

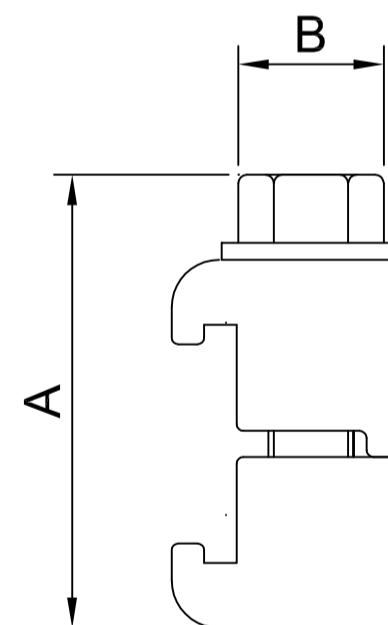


### ISO DOUBLE CLAW CLAMPS, MILD STEEL, ZINC PLATED

- \* MATERIAL: ALUMINIUM
- \* BAKEABLE TO 150° C

Used with bolt through bolt holes and centering ring

ORDER CODE	NW	A	B
ISO63/250DCMS	63/250	60	M10
ISO320/500DCMS	320/500	76	M12
ISO630DCMS	630	86	M12



### ISO DOUBLE CLAW CLAMPS, STAINLESS STEEL

- \* MATERIAL: 304 STAINLESS STEEL
- \* BAKEABLE TO 150° C

Used with centering ring

ORDER CODE	NW	A	B
ISO63/250DCSS	63/100	60	M10

