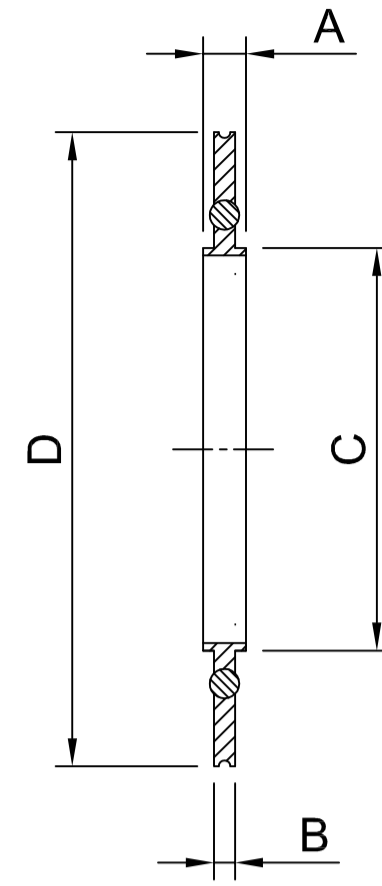


ISO STAINLESS STEEL TRAPPED CENTERING RING, NITRILE O'RING, ALUMINIUM OUTER

- \* MATERIAL: STAINLESS STEEL, ALUMINIUM & NITRILE
- \* BAKEABLE TO 100°C
- \* VACUUM RATING 1x10<sup>-8</sup> mbar

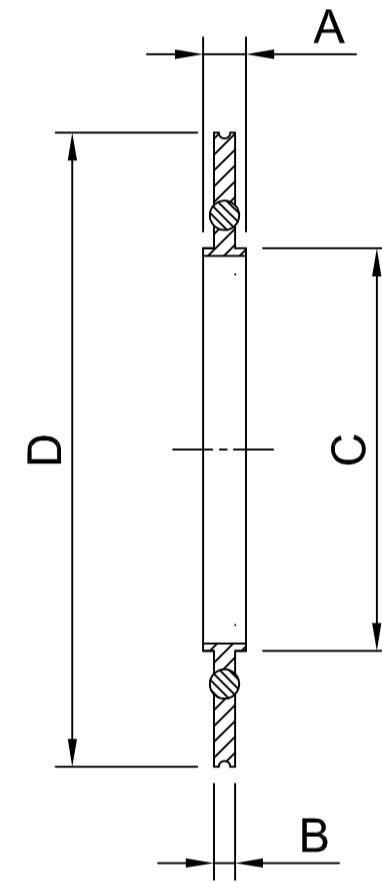
ORDER CODE	NW	A	B	C	D
ISO63SNCR	63	8	3.9	70	94
ISO80SNCR	80	8	3.9	83	109
ISO100SNCR	100	8	3.9	102	128
ISO160SNCR	160	8	3.9	153	179
ISO200SNCR	200	8	3.9	213	239
ISO250SNCR	250	8	3.9	261	287
ISO320SNCR	320	14	5.6	318	358
ISO400SNCR	400	14	5.6	400	440
ISO500SNCR	500	14	5.6	501	541
ISO630SNCR	630	14	5.6	651	691



ISO ALUMINIUM TRAPPED CENTERING RING, NITRILE O'RING, ALUMINIUM OUTER

- \* MATERIAL: ALUMINIUM & NITRILE
- \* BAKEABLE TO 100°C
- \* VACUUM RATING 1x10<sup>-8</sup> mbar

ORDER CODE	NW	A	B	C	D
ISO63ANCRT	63	8	3.9	70	94
ISO80ANCRT	80	8	3.9	83	109
ISO100ANCRT	100	8	3.9	102	128
ISO160ANCRT	160	8	3.9	153	179
ISO200ANCRT	200	8	3.9	213	239
ISO250ANCRT	250	8	3.9	261	287
ISO320ANCRT	320	14	5.6	318	358
ISO400ANCRT	400	14	5.6	400	440
ISO500ANCRT	500	14	5.6	501	541
ISO630ANCRT	630	14	5.6	651	691



ISO ALUMINIUM CENTERING RING, NITRILE O'RING,

- \* MATERIAL: ALUMINIUM & NITRILE
- \* BAKEABLE TO 100°C
- \* VACUUM RATING 1x10<sup>-8</sup> mbar

ORDER CODE	NW	A	B	C
ISO63ANCR	63	8	3.9	70
ISO80ANCR	80	8	3.9	83
ISO100ANCR	100	8	3.9	102
ISO160ANCR	160	8	3.9	153
ISO200ANCR	200	8	3.9	213
ISO250ANCR	250	8	3.9	261
ISO320ANCR	320	14	5.6	318
ISO400ANCR	400	14	5.6	400
ISO500ANCR	500	14	5.6	501
ISO630ANCR	630	14	5.6	651

